



shindaiwa®

2023
PRODUCT CATALOG



Shindaiwa has a rich heritage as a leader in the outdoor power equipment industry. For decades professionals have relied on Shindaiwa for powerful, dependable and long-lasting equipment. As an example, the T262 and T302 trimmers are a testament to that storied heritage and demonstrate Shindaiwa's continuing commitment to quality and performance.

The Shindaiwa brand is manufactured and distributed by ECHO Incorporated, headquartered in Lake Zurich, Illinois. Every product is researched, developed and tested by skilled engineers and then manufactured using the highest quality components available so when it's used on the jobsite, it performs. Backing up that commitment to quality is an industry-leading 2-year commercial warranty.

PRODUCT ICONS

See below for enhanced explanations of select product feature icons throughout the catalog.



Homeowner use



2-stage filtration



Low noise



Pro use



Reduces starting effort by 30%



Spread pattern



Automotive filtration



Spring assist starter



Momentary Stop



TABLE OF CONTENTS

Trimmers	4
Brushcutters	5
Trimmer/Brushcutter Accessories	6
Edgers & Accessories	8
Blowers	9
Chainsaws	11
Chainsaw Accessories	13
PowerBroom™ & Attachments	14
Hedge Trimmers	15
Multi-Tool & Attachments	17
Spreaders & Accessories	18
Sprayers	19
Sprayer Accessories	20
Red Armor®	21
YouCan® Maintenance Kits	22
Specifications	23



To support confidence in our products, we offer a 2-year commercial and 5-year consumer warranty. We're so positive you will be happy with your Shindaiwa purchase, we guarantee it! We offer a no-questions-asked, 7-day money-back guarantee on all Shindaiwa products. Visit your local Shindaiwa dealer or shindaiwa-usa.com to learn more.

TRIMMERS & BRUSHCUTTERS

Performance. That's exactly what you get from Shindaiwa's commercial-grade grass trimmers and brushcutters. Shindaiwa's easy-to-use custom ergonomic controls, lightweight design, and powerful professional-grade, 2-stroke engine technologies give you the tools to enhance your productivity. Whether you need the long reach of a standard, straight shaft trimmer or the improved control from the ergonomic u-handle on a brushcutter to tackle clearing applications including rough grass, thickets, shrubs and dense undergrowth, Shindaiwa string trimmers and brushcutters are designed for performance. All Shindaiwa trimmers and brushcutters feature an industry-leading 2-year commercial warranty.



TRIMMERS



BRUSHCUTTERS

T235



Excellent entry-level straight shaft model with great fuel efficiency.

- Speed-Feed® 400 trimmer head reloads in seconds without disassembly
- Tool-less, easy-access, commercial-grade felt air filter for durability
- Vibration reduction system and cushioned handles for increased comfort
- Straight shaft provides a long reach

Engine (cc)	21.2
Weight (lbs.)	11.9
Shaft Length (in.)	59
Fuel Capacity (fl. oz.)	12.8
Cutting Head:.. Speed-Feed® 400	
Cutting Swath (in.)	20



T262



What the professionals use everyday for medium to heavy trimming.

- Speed-Feed® 400 trimmer head reloads in seconds without disassembly
- Tool-less access, two-stage air filtration system dramatically increases ease of maintenance
- 1.62:1 gear reduction for fast, efficient cutting
- Overmolded front and rear hand grips for extreme comfort

Engine (cc)	25.4
Weight (lbs.)	12.4
Shaft Length (in.)	59
Fuel Capacity (fl. oz.)	20.6
Cutting Head:.. Speed-Feed® 400	
Cutting Swath (in.)	20



T262X



Everyday professional model that is equipped to switch to blade use.

- Speed-Feed® 400 trimmer head reloads in seconds without disassembly
- Tool-less access, two-stage air filtration system dramatically increases ease of maintenance
- 1.62:1 gear reduction for fast, efficient cutting
- Overmolded front and rear hand grips for extreme comfort

Engine (cc)	25.4
Weight (lbs.)	13.7
Shaft Length (in.)	59
Fuel Capacity (fl. oz.)	20.6
Cutting Head:..	Speed-Feed® 400
Cutting Swath (in.)	20



T302



Large displacement straight shaft model handles tough, thick grasses and weeds.

- Speed-Feed® 500 trimmer head reloads in seconds without disassembly
- Magnesium fan housing reduces weight with increased durability
- 1.62:1 gear reduction for fast, efficient cutting
- Overmolded front and rear hand grips for extreme comfort

Engine (cc)	30.5
Weight (lbs.)	13.7
Shaft Length (in.)	59
Fuel Capacity (fl. oz.)	24
Cutting Head:..	Speed-Feed® 500
Cutting Swath (in.)	20



T302X



Large displacement straight shaft model handles tough, thick grasses and weeds, also equipped to switch to blade use.

- Speed-Feed® 500 trimmer head reloads in seconds without disassembly
- Magnesium fan housing reduces weight with increased durability
- 1.62:1 gear reduction for fast, efficient cutting
- Overmolded front and rear hand grips for extreme comfort

Engine (cc)	30.5
Weight (lbs.)	14.3
Shaft Length (in.)	59
Fuel Capacity (fl. oz.)	24
Cutting Head:..	Speed-Feed® 500
Cutting Swath (in.)	20



C262



Increased power for professional-level brushcutting and clearing.

- U-shaped handle for improved control and ergonomics
- Speed-Feed® 400 trimmer head reloads in seconds without disassembly
- Includes all hardware, including 2-in-1 shield, for either trimmer head or blade use
- 1.62:1 gear reduction for fast, efficient cutting

Engine (cc)	25.4
Weight (lbs.)	14.1
Shaft Length (in.)	59
Fuel Capacity (fl. oz.)	20.6
Cutting Head:..	Speed-Feed® 400
Cutting Swath (in.)	20



C302



Professional power for extreme clearing.

- U-shaped handle for improved control and ergonomics
- Speed-Feed® 500 trimmer head reloads in seconds without disassembly
- Includes all hardware, including 2-in-1 shield, for either trimmer head or blade use
- 1.62:1 gear reduction for fast, efficient cutting

Engine (cc)	30.5
Weight (lbs.)	14.8
Shaft Length (in.)	59
Fuel Capacity (fl. oz.)	24
Cutting Head:..	Speed-Feed® 500
Cutting Swath (in.)	20





EASY AS



1. LINE UP ARROWS

2. FEED LINE

3. TWIST BOTTOM DISC TO WIND



Scan this QR code to see how to load trimmer line in your Speed-Feed® trimmer head.

Our easy-to-use and innovative Speed-Feed® trimmer heads take the hassle out of refilling your trimmer head.

- No disassembly required
- Reload your trimmer line in 30 seconds or less
- Rugged head for medium and heavy-duty applications
- Smooth bottom enables the head to glide along the ground for an even cut

Speed-Feed® 400 Trimmer Head

Part # - 78890-30000 Universal

Part # - 78890-30000B Bulk package of 24

NEW

Speed-Feed® 500 Trimmer Head

Part # - 78890-21050 Universal

Part # - 78890-21050B Bulk package of 24

Universal head with adapters, fits other competitor models

TRIMMER HEADS & LINE

GRASS ATTACK™: SQUARE TRIMMER LINE

	.080 in.	ft.	.095 in.	ft.	.105 in.	ft.	.130 in.	ft.
Mini Clam	908000	40	-	-	-	-	-	-
Lg. Clam	-	-	909501	224	910501	180	913001	126
Med. Spool	908003	978	909503	682	910503	522	913003	360
Lg. Spool	-	-	909505	1,136	910505	870	913005	600
XL Spool	-	-	-	-	-	-	913010	1800

SILENTWIST®: SPIRAL TRIMMER LINE

	.080 in.	ft.	.095 in.	ft.	.105 in.	ft.	.130 in.	ft.
Mini Clam	808000	40	-	-	-	-	-	-
Sm. Clam	808002	160	809502	115	810502	90	813002	93
Lg. Clam	-	-	809501	230	810501	185	-	-
Med. Spool	808003	960	809503	685	810503	550	-	-
Lg. Spool	-	-	809505	1,140	810505	920	-	-

ULTRA-FLEX™: ROUND TRIMMER LINE

	.080 in.	ft.	.095 in.	ft.	.105 in.	ft.	.130 in.	ft.	.155 in.	ft.
Mini Clam	-	-	09504	40	-	-	-	-	-	-
Sm. Clam	08002	201	-	-	-	-	-	-	-	-
Lg. Clam	-	-	09501	282	10501	234	13001	150	15501	107
Med. Spool	08003	1,206	09503	846	10503	702	13003	450	15503	321
Lg. Spool	-	-	09505	1,410	10505	1,170	13005	750	-	-
XL Spool	-	-	09510	2,820	10510	2,340	13010	1,500	-	-

HIGH-CAPACITY MANUAL HEAD

Traditional style head designed for rugged use with a large line holding capacity.

Universal
Bulk Package of 24

78890-40000
78890-40000B



HEAVY-DUTY FIXED LINE HEAD

Durable magnesium head that is designed for tough cutting environments and areas that are abrasive.

Universal
Bulk package of 10

80794A (with adapters)
80786 (without adapters)



*Line not included



LIGHT GRASS/WEEDS
SMALL RESIDENTIAL AREAS
.065 in. - .080 in. LINE



MEDIUM GRASS/WEEDS
LARGER RESIDENTIAL AREAS OR
LIGHT COMMERCIAL AREAS
.095 in. - .105 in. LINE



HEAVY GRASS/WEEDS
INDUSTRIAL LANDSCAPING,
COMMERCIAL LANDSCAPING
.130 in. + LINE

Unique shape of this Speed-Feed® trimmer head is a trademark of ECHO Inc.



HEAD AND BLADE FIT CHART

Model	Speed-Feed® 400	Speed-Feed® 500	Heavy-Duty Fixed	High-Capacity Manual	8 in. 22-Tooth Brush Blade 25 mm	9 in. 4-Tooth Brush Blade 25 mm	10 in. 3-Tooth Grass & Weed Blade 25 mm
Part # - Universal	78890-30000	78890-21050	-	78890-40000	80510	80728	80771
Part # - Dedicated	-	-	80794A	-	-	-	-
For Trimmers							
Std. Line Diameter	.095 in.	.095 in.	.095 in.	.095 in.	-	-	-
Std. Line Accepted	20 ft.	40 ft.	16 in. strips	40 ft.	-	-	-
Min. Line Diameter	.080 in.	.080 in.	.080 in.	.080 in.	-	-	-
Max Line Diameter	.105 in.	.130 in.	.130 in.	.130 in.	-	-	-
Pre-Loaded Line	Silentwist®	Silentwist®	-	Silentwist®	-	-	-
T235	■		■		■	■	■
T262	■	■	■	■	■	■	■
T262X	■	■		■	■	■	■
T302	■	■	■	■			■
T302X	■	■		■			■
For Brushcutters							
C262	■	■	■	■	■	■	■
C302	■	■	■	■			■
Arbor Diameter	-	-	-	-	25 mm	25 mm	25 mm
Application Guide							
Small Weeds						✓	
Large Weeds					✓	✓	✓
Reeds, Bushes, Heavy Grass					✓	✓	✓
Bushes, Small Trees					✓		

Standard ■ Optional ■

Trimmer-to-Brushcutter Conversion Kit

Kit includes all components required to convert smaller trimmers to operate with a brushcutter blade. (Kit does not include blade) 25 mm arbor

Part #: 80575B for T235, T262, T302



Brushcutter Pro Harness

Eases long periods of use by distributing weight evenly across the body. Wide hip and shoulder pads improve comfort while reducing fatigue. Reduces risk of contacting cutting head area during operation.

Part # C062000430



SAFETY GLASSES AND FACE PROTECTION

Shindaiwa safety glasses are lightweight and impact-resistant. All models meet ANSI Z87.1 standard.



Element Glasses

Lightweight and frameless with rubber temple and nose pieces. Curved lenses provide excellent side protection against dust and debris.

Part #: 82082



Safety Glasses (clear lens)

Lightweight and adjustable with full side and brow protection. Soft nose pad and adjustable temples.

Part #: 80767



Safety Glasses (blue lens)

Lightweight and adjustable with full side and brow protection. Soft nose pad and adjustable temples.

Part #: 80766



Enduro Glasses

Sport-styled, framed lenses with wide temple support, and full eye protection coverage for both work and sport activities.

Part #: 82080



Flex Glasses

Fully adjustable to allow up to four different temple lengths and nose pad widths. Ratcheting lens pitch adjustment allows for varying work applications.

Part #: 82081



Safety Glasses (gray lens)

Lightweight and frameless with formed contour nose pad. One piece polycarbonate lens provides excellent protection against dust and debris.

Part #: 80765



Pilot Glasses

Sport styled, framed lenses with cushioned temple support. Optional foam padding seals against dust and debris.

Part #: 82079



Brushcutter System

Includes steel mesh visor and earmuffs offering excellent face and hearing protection while trimming or brushcutting. NRR 23 dB(A) rating.

Part #: 82003

EDGERS

Shindaiwa's edgers make it easy to leave a perfect edge, every time. Commercial features, such as a height-adjustable guide wheel, open-face shield, and steel skid plate, combine with a high-performance engine to power through the toughest grass and dirt.



EDGERS

LE235



Perfect model to give home sidewalks that professional look.

- Durable, metal shield and rubber debris flap reduce material kickback
- Heavy-duty, height-adjustable guide wheel with solid rubber tread and captive hardware
- Tool-less access air filtration system for convenient in-field servicing
- Large front handle for an easy, controlled grip

Engine (cc)	21.2
Weight (lbs.)	13.2
Length (in.)	68.2
Fuel Capacity (fl. oz.).....	12.8



LE262



Powerful, professional curved shaft model for commercial and industrial use.

- Contoured, aluminum debris shield with a cut-away, open face to reduce clogging
- Tool-less access, two-stage air filtration system dramatically increases ease of maintenance
- 2:1 gear reduction to power through tough, overgrown grass
- Easy height-adjustment wheel with captive hardware

Engine (cc)	25.4
Weight (lbs.)	14.3
Length (in.)	69.0
Fuel Capacity (fl. oz.).....	20.6



EDGER ACCESSORIES



Lawn Edger Blade

Standard .090 in. thickness for edging driveways, sidewalks, flower beds and other borders. Length: 7.75 in.

Part #: 80419C (2 pack)

Part #: 80419B (Bulk pack of 50)



BLOWERS

Each backpack model features double-adjusting shoulder straps, padded backrests, and ergonomically positioned controls for all-day comfort. The handheld blowers are durable and powerful, offering excellent fuel efficiency.



BLOWERS

EB252



Great performance at a great value and ideal for quick clean-ups around the house.

- Double-grid air intake design reduces clogging and interference with user's clothing
- Exclusive curved blower tube provides rotational control to reduce user fatigue
- Shoulder harness attachment points allow the use of shoulder harness (sold separately) to support weight of unit

Engine (cc)	25.4
Weight (lbs.)	8.6
Fuel Capacity (fl. oz.).....	18.6
Max Air Speed at Nozzle (mph).....	170
Newton Blowing Force (N) at Nozzle....	15.8
Air Volume at Nozzle (CFM).....	453
Noise Level (dB(A))*	70



EB262



Best-in-class handheld blower for lightweight performance on more demanding jobs.

- Double-grid air intake design reduces clogging and interference with user's clothing
- Includes both round and flared pipes for a variety of applications
- Shoulder harness attachment points allow the use of shoulder harness (sold separately) to support weight of unit

Engine (cc)	25.4
Weight (lbs.)	9.8
Fuel Capacity (fl. oz.).....	20.3
Max Air Speed at Nozzle (mph).....	172
Newton Blowing Force (N) at Nozzle....	15.8
Air Volume at Nozzle (CFM).....	456
Noise Level (dB(A))*	70



EB600RT



Increased power for larger residential chores or for entry-level pros.

- Tube-mounted throttle with cruise control
- Exclusive vented back pad circulates air around user for increased comfort in hot weather
- Padded backrest and shoulder straps for comfort
- Patented metal wear ring is a useful debris scraper and protects blower pipe from damage

Engine (cc)	58.2
Weight (lbs.)	22.7
Fuel Capacity (fl. oz.).....	62
Max Air Speed at Nozzle (mph).....	216
Newton Blowing Force (N) at Nozzle.....	22
Air Volume at Nozzle (CFM).....	517
Noise Level (dB(A))*	70



EB633RT



Mid-level commercial backpack blower offers exceptional durability and performance.

- Tube-mounted throttle with cruise control
- Large, top-mounted, pleated, automotive-style air filter for superior filtration
- Wide-angle tube rotation for optimum mobility
- Padded backrest and shoulder straps for comfort

Engine (cc)	63.3
Weight (lbs.)	26.2
Fuel Capacity (fl. oz.).....	67.6
Max Air Speed at Nozzle (mph).....	233
Newton Blowing Force (N) at Nozzle.....	28
Air Volume at Nozzle (CFM).....	651
Noise Level (dB(A))*	74



EB770/RT



Powerful, large displacement option for professionals or properties with heavy debris.

- Available with hip- (EB770) or tube- (EB770RT) mounted throttle with cruise control
- Padded backrest and shoulder straps for comfort
- Exclusive vented back pad circulates air around user for increased comfort in hot weather
- Side-mounted, heavy-duty, dual-stage air filtration for long engine life

Engine (cc)	63.3
Weight (lbs.)	24.5/24.3
Fuel Capacity (fl. oz.).....	68.3
Max Air Speed at Nozzle (mph).....	234
Newton Blowing Force (N) at Nozzle.....	33
Air Volume at Nozzle (CFM).....	756
Noise Level (dB(A))*	74



EB910/RT



Shindaiwa's most powerful backpack blower.

- Available with hip- (EB910) or tube- (EB910RT) mounted throttle with cruise control
- Exclusive vented back pad circulates air around user for increased comfort in hot weather
- Heavy-duty padded backrest and shoulder straps for comfort

Engine (cc)	79.9
Weight (lbs.)	27.5/27.2
Fuel Capacity (fl. oz.).....	83.8
Max Air Speed at Nozzle (mph).....	220
Newton Blowing Force (N) at Nozzle.....	48
Air Volume at Nozzle (CFM).....	1110
Noise Level (dB(A))*	80



CHAINSAWS

Shindaiwa's professional-grade chainsaws are designed for high-performance, easy handling, and long-lasting durability. They incorporate professional features that utilize the best technology and outstanding designs to perform in the harshest conditions. With many models to choose from, there's a Shindaiwa chainsaw that's right for you.



CHAINSAWS

358Ts



Top handle chainsaw for heavy branches and sectioning trees.

- Vibration reduction system for increased comfort
- Integrated choke and fast idle with trigger release for fast starts
- Purge bulb provides fresh fuel to carburetor for fast starts
- Contoured, ergonomic handle designed to fit your hand for great operator comfort

Engine (cc)	35.8
Weight (lbs.)	8
Bar Length (in.).....	14, 16
Fuel Capacity (fl. oz.).....	11.2
Oil Capacity (fl. oz.)	8.2



305s



Entry-level saw for general yard clean-up, small tree felling and light pruning.

- i-30™ starter reduces starting effort by 30%
- Top-mounted, tool-less access air filter cover for quick maintenance
- Vibration reduction system for increased comfort
- Side-access chain tensioner for easy chain adjustments

Engine (cc)	30.5
Weight (lbs.)	8.8
Bar Length (in.).....	14
Fuel Capacity (fl. oz.).....	8.5
Oil Capacity (fl. oz.)	8.8



**NEW
493**



A lightweight and powerful chainsaw for heavier jobs, such as installing fence posts, storm clean-up and firewood.

- Purge bulb and momentary stop switch for easy starting
- Tool-less air filter cover for easy access
- Side-access chain tensioner for quick chain adjustments
- Momentary stop switch automatically returns to “ON” position

Engine (cc)	50.2
Weight (lbs.)	11.1
Bar Length (in.).....	16, 18, 20
Fuel Capacity (fl. oz.).....	16.2
Oil Capacity (fl. oz.)	11.2



591



Perfect for farm/ranch use or larger land lots and tree felling.

- Decompression valve for easier starting
- Heavy-duty, easy-access air filter for convenient in-field servicing
- Two-piece flocked air filter for easy cleaning
- Translucent fuel tank for quick fuel level checks

Engine (cc)	59.8
Weight (lbs.)	13.2
Bar Length (in.).....	20
Fuel Capacity (fl. oz.).....	21.8
Oil Capacity (fl. oz.)	10.2



600sx



Powerful saw ideal for heavy on-ground use, logging and larger clearing jobs.

- Decompression valve for easier starting
- Heavy-duty, easy-access air filter for convenient in-field servicing
- Heavy-duty aluminum handle with rubber grip for increased comfort and reduced vibration
- Professional-grade magnesium sprocket cover and crank case

Engine (cc)	59.8
Weight (lbs.)	13.7
Bar Length (in.).....	20, 24, 27
Fuel Capacity (fl. oz.).....	21.8
Oil Capacity (fl. oz.)	10.2



CHAINSAW ACCESSORIES

Bars & Chains

Shindaiwa bars and chains are specifically matched to get the most out of every saw. See chart below for proper fit up.

Model	BAR			Drive Link Count	Gauge (in.)	CHAIN		
	Length in. (cm)	Sprocket Nose	Bar Part #			Pitch (in.)	Chain Part #	File Size (in.)
305s	14 (35)	Non-Replaceable	S14A0CD3752	52	.050	3/8 lp	S91PX52CQ	5/32
	16 (40)		S16A0CD3757	57			S91PX57CQ	
358Ts	14 (35)	Non-Replaceable	S14A0ES3752	52	.050	3/8 lp	S91PXL52CQ	5/32
	16 (40)		S16A0ES3757	57			-	
402s	16 (40)	Non-Replaceable	S16A0CD3757	57	.050	3/8 lp	S91PX57CQ	5/32
	18 (45)		S18A0CD3762	62			S91PX62CQ	
492	16 (40)	Non-Replaceable	S16F0AD3366	66	.050	.325	S20BPX66CQ	3/16
	18 (45)		S18F0AD3372	72			S20BPX72CQ	
	20 (50)		S20F0AD3378	78			S20BPX78CQ	
493	16 (40)	Non-Replaceable	S16B0AD3366	66	.050	.325	S20BPX66CQ	3/16
	18 (45)		S18B0AD3372	72			S20BPX72CQ	
	20 (50)		S20B0AD3378	78			S20BPX78CQ	
591	18 (45)	Non-Replaceable	S18D0AS3864	64	.050	3/8	S72LPX64CQ	7/32
	20 (50)		S20D0AS3870	70			S72LPX70CQ	
591/600sx	20 (50)	Replaceable	S20D0PS3870*	70	.050	3/8	S72LPX70CQ	7/32
	24 (60)		S24D0PS3881*	81			-	
	27 (68)		S27D0PS3893*	93			S72LPX93CQ	

lp=Low Profile

* solid bars, all other bars are laminated

The part numbers listed above (e.g. S91PXL52CQ) include a two- or three-letter code that references the chain type. See detailed descriptions below.

CHAIN TYPE

LOW-KICKBACK CHAIN

- PX** Low-vibration chisel cutters with ramped depth gauges, bumper drive links and standard sequence.
- BPX** Low-vibration chisel cutters with bumper drive links and standard sequence.
- PXL** Low-vibration semi-chisel cutter with ramped depth gauges, bumper drive links and longer top plate.

PROFESSIONAL CHAIN

- LPX** Round-ground chisel cutters with bumper drive links and standard sequence.

Chainsaw Chaps*

Expandable 30 in. - 42 in. waist. Meets OSHA standards for leg protection. UL classified in accordance with ASTM F1897-2014.

Part #: 82400 - 36 in. long, Apron design



ToughChest™ - 24 in. Chainsaw Case

Fits Shindaiwa saws with up to 24 in. bar. Does not fit the 600sx.

Dimensions: 20 in. L x 12 in. W x 12.5 H

Part #: 82201 - 41in. in length with scabbard



Chainsaw Gloves

Features two layers of Kevlar® on the back for cut resistance, and foam pads on the palm for vibration reduction. 100% goatskin leather.

Part #: 82301 (L)

Part #: 82302 (XL)



Bar & Chain Oil

Reduced frictional heating with this unique blend of lubricants and detergents, all while lessening resin buildup and promoting chip and dust removal.

- Anti-wear additives
 - Tackifiers for lubrication
 - 2-year shelf life when properly stored
 - Meets OECD 301 specifications
- 1 qt. Part #: 99909-55130 (12 per case)
1 gal. Part #: 81089 (4 per case)



Chainsaw Safety Helmet System

Noise reduction rating 22 dB(A) rated.

Part #: 82004



*Shindaiwa recommends the use of personal protective equipment when operating Shindaiwa power equipment. Chainsaw chaps may not provide the same level of protection with battery-powered chainsaws as with gas chainsaws.

POWERBROOM™

A Shindaiwa exclusive, the PS262 PowerBroom™ features outstanding power and a solid-steel drive shaft to perform any sweeping chore. With three different brush or paddle choices, you are sure to have the tool you need to clean debris from nearly any surface.



POWERBROOM™



PS262

From construction sites and walkways to golf courses and roadsides, the PowerBroom™ completes any sweeping chore in a fraction of the time. *All sweeping attachments are sold separately.*

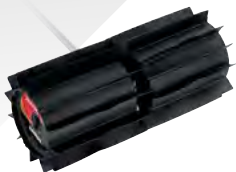
- Tool-less access, two-stage air filtration system dramatically increases ease of maintenance
- Cushioned front and rear grips for maximum comfort
- Accepts three different sweeping attachments for a wide range of tasks (*sold separately*)

Shown with available
12-Fin Rubber Paddle
(sold separately)



Engine (cc)	25.4
Weight (lbs.)	13.3
Fuel Capacity (fl. oz.).....	20.6

POWERBROOM™ ATTACHMENTS



12-Fin Rubber Paddle

Rubber paddles prevent damage to soft surfaces, such as grass or artificial turf. Ideal for gravel or mulch cleanup.

Weight: 9.2 lbs.

Sweeping swath: 23 in.

Part # 99909-35000



Aggressive Nylon Brush

Thicker bristles than the Nylon Brush for removing tougher debris.

Weight: 4.7 lbs.

Sweeping swath: 11 in.

Part # 80712



Nylon Brush

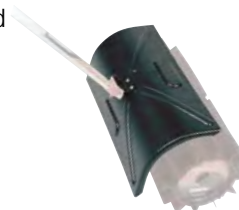
For cleanup of light debris, such as loose dirt from hard surfaces. Also useful for spreading heavy liquids.

Weight: 7.9 lbs. Sweeping swath: 20 in.

Part # 99909-11027

Replacement Brush

Part # 99909-11004



Replacement Brush

Part # 80711

Debris Shield

Provides added protection for the operator against liquids or light debris.

Fits all PowerBroom models and attachments.

Part # 99909-33021





HEDGE TRIMMERS

Shindaiwa hedge trimmers offer single-sided and double-sided blade configurations, as well as shafted models, for the professional who demands performance. Rubber grips provide great comfort and control. The DH232 and DH235 feature a 180° rotating handle. The HT232 and HT235 are lightweight and equipped with a standard debris sweeper for easy clean-up. Shafted hedge trimmers offer a choice of fixed or articulating gear cases as well as shaft lengths from 33 in. to 59 in..

2 year commercial warranty	5 year consumer warranty
---	---------------------------------------



HEDGE TRIMMERS

DH232



Lightweight, professional double-sided performance.

- Double-sided, double-reciprocating RazorEdge® blades feature three sharpened edges for more efficient cutting
- 3-position 180 degree rotating handle for increased maneuverability
- Front-facing exhaust prevents plant damage
- Full-spring suspension system reduces vibration for operator comfort

Engine (cc)	21.2
Weight (lbs.)	11
Blade Length (in.)	22
Fuel Capacity (fl. oz.).....	12.5



DH235



Lightweight, professional double-sided performance, with longer blade length than DH232.

- Double-sided, double-reciprocating RazorEdge® blades feature three sharpened edges for more efficient cutting
- 3-position 180 degree rotating handle for increased maneuverability
- Front-facing exhaust prevents plant damage
- Full-spring suspension system reduces vibration for operator comfort

Engine (cc)	21.2
Weight (lbs.)	11.4
Blade Length (in.)	28
Fuel Capacity (fl. oz.).....	12.5



HT232



Lightweight, professional single-sided performance.

- Single-sided, double-reciprocating RazorEdge® blades feature three sharpened edges for more efficient cutting
- Full-length debris shield for reduced cleanup time
- Front-facing exhaust prevents plant damage
- Full-spring suspension system reduces vibration for operator comfort

Engine (cc)	21.2
Weight (lbs.)	10.2
Blade Length (in.)	28
Fuel Capacity (fl. oz.).....	12.5



HT235



Lightweight, professional single-sided performance, with longer blade length than HT232.

- Single-sided, double-reciprocating RazorEdge® blades feature three sharpened edges for more efficient cutting
- Full-length debris shield for reduced cleanup time
- Front-facing exhaust prevents plant damage
- Full-spring suspension system reduces vibration for operator comfort

Engine (cc)	21.2
Weight (lbs.)	10.8
Blade Length (in.)	38
Fuel Capacity (fl. oz.).....	12.5



FH235



Lightweight, fixed gear case model for long reach with less fatigue.

- 21 in. double-sided, double-reciprocating RazorEdge® blades feature three sharpened edges for more efficient cutting
- Stepped gear case design places user and unit away from hedge for best ergonomics
- Vibration reduction system for increased comfort
- Commercial-duty air filtration system for long engine life

Engine (cc)	21.2
Weight (lbs.)	12.5
Blade Length (in.)	21
Shaft Length (in.)	42
Fuel Capacity (fl. oz.).....	12.8



AH262



Powerful, professional durability with an articulating gear case and 59 in. shaft length.

- 21 in. double-sided, double-reciprocating RazorEdge® blades feature three sharpened edges for more efficient cutting
- Tool-less access, two-stage air filtration system dramatically increases ease of maintenance
- Articulating gear case provides 10 blade settings with a total range of 135 degrees
- Vibration-reduction system isolates front and rear handles from the engine and gear case for comfort

Engine (cc)	25.4
Weight (lbs.)	14.8
Blade Length (in.)	21
Shaft Length (in.).....	59
Fuel Capacity (fl. oz.).....	20.6



AHS262



Powerful, professional durability with an articulating gear case and 33 in. shaft length.

- 21 in. double-sided, double-reciprocating RazorEdge® blades feature three sharpened edges for more efficient cutting
- Tool-less access, two-stage air filtration system dramatically increases ease of maintenance
- Articulating gear case provides 10 blade settings with a total range of 135 degrees
- Vibration-reduction system isolates front and rear handles from the engine and gear case for comfort

Engine (cc)	25.4
Weight (lbs.)	13.6
Blade Length (in.)	21
Shaft Length (in.).....	33
Fuel Capacity (fl. oz.).....	20.6



MULTI-TOOL SYSTEM



Shindaiwa's Multi-Tool System is built for those looking for maximum versatility from a single power source that can be used with multiple attachments, plus a 3 ft. extension ensuring you have the right tool to accomplish the task at hand. The multi-tool system is a great alternative to dedicated units by reducing maintenance and space.



Engine (cc)	21.2
Weight (lbs.)	9.8
Shaft Length (in.).....	40.7
Fuel Capacity (fl. oz.)..	12.8



M235

The best choice for many residential yard chores.

- Tool-less coupler allows for fast, easy changes on multiple attachments
- Adjustable left handed grip for desired operator's hand position
- Vibration reduction system for increased comfort
- Accepts up to 9 Multi-Tool attachments



Engine (cc)	25.4
Weight (lbs.)	10
Shaft Length (in.).....	40.7
Fuel Capacity (fl. oz.)..	20.6



M262

More power for commercial applications.

- Tool-less coupler allows for fast, easy changes on up to 10 attachments
- Tool-less access, two-stage air filtration system dramatically increases ease of maintenance
- Engine vibration reducing mounting absorbs engine vibration
- Cushioned front and rear handles increase operator comfort

MULTI-TOOL SYSTEM ATTACHMENTS

These attachments only work with the M235 and M262 power sources.



Trimmer Attachment

Commercial-grade trimmer attachment using Shindaiwa's Speed-Feed® 400 head. 34 in. length, 3.2 lbs.

Part # 66001



Mid-Reach Articulated Hedge Trimmer

10-position articulation with a shorter shaft for maneuvering in tight areas. 38 in. length, 4.5 lbs.

Part # 66005



Tiller/Cultivator Attachment

6.5 in. swath and 42:1 gear reduction makes quick work of flower and garden bed maintenance. 35.7 in. length, 5.2 lbs.

Part # 66008



Lawn Edger Attachment

7.75 in. blade with open-face shield and guide for effortless edging. 30.8 in. length, 4.6 lbs.

Part # 66010



Brushcutter Attachment

Commercial-grade construction with 3-tooth grass and weed blade. 32.7 in. length, 2.6 lbs.

Part # 66004



PowerBroom™ Attachment

Ideal for cleaning gravel, mulch, or other debris from grass or artificial turf. 36.5 in. length, 11.3 lbs. Not compatible with the M235.

Part # 66011



Standard Hedge Trimmer

21 in. double-sided, double-reciprocating blades and an extra heavy-duty, professional-grade gear case. 50.1 in. length, 4.1 lbs.

Part # 66006



Pole Pruner Attachment

10 in. bar with long shaft for reaching high limbs. 57.1 in. length, 4.9 lbs.

Part # 66002



Articulated Hedge Trimmer

10-position articulation coupled with 21 in. blades and a 28 in. shaft for maximum reach. 64.4 in. length, 5.6 lbs.

Part # 66003



3 ft. Extension

Tool-less coupler allows easy installation between power source and attachments. Only for use with pole pruner and all hedge trimmer attachments. 39.2 in. length, 2.7 lbs.

Part # 66012

POLE PRUNER ATTACHMENT REPLACEMENT CHART

Bar Length (in.)	Fits	Replacement Bar	Replacement Chain
10	66002	S10A0CD3739	S91VXL39CQ

SPREADERS



Shindaiwa Spreaders are engineered for tough applications and built to last. All four models feature large rubber tires for effortless movement across all surfaces and are factory-calibrated to ensure consistent application of materials.

RS600



Durable construction perfect for homeowners applying fertilizer, pesticide, herbicide and grass seed.

- Factory-calibrated spread pattern provides even, accurate coverage
- Pro-style “T handle” places chute control at your fingertips
- Maintenance-free gear case reduces maintenance time and costs
- Foot-operated side deflector keeps material out of unwanted areas

Optional hopper cover for RS600

Included with RS850/S/W

Part # G401000020



Weight (lbs.)	23
Tire Size (in.)	10
Handle Length (in.)	32
Hopper Capacity (lbs.)	60
Frame.	Powder-coated Steel



For RS600 only.



RS850



85 lbs. hopper capacity, along with a heavy duty agitator, standard side deflector and a hopper grate.

- Includes hopper grate and cover
- Pro-style “T handle” places controls at fingertips
- Heavy-duty metal gears provide long-lasting durability
- Foot-operated side deflector keeps material out of unwanted areas

Weight (lbs.)	35
Tire Size (in.)	13
Hopper Capacity (lbs.)	85
Frame.	Powder-coated Steel



RS850S



The RS850S is a stainless steel frame version of the RS850.

- Includes hopper grate and cover
- Pro-style “T handle” places controls at fingertips
- Heavy-duty metal gears provide long-lasting durability
- Foot-operated side deflector keeps material out of unwanted areas

Weight (lbs.)	37
Tire Size (in.)	13
Hopper Capacity (lbs.)	85
Frame.	Stainless Steel



RS850W



The RS850W is a winter model for spreading salt, featuring a stainless steel frame, salt-specific hopper and agitator, along with a 4-sided deflector

- Includes hopper grate and cover
- Designed specifically for winter applications
- Large hopper opening for use with bulk rock salt
- 3-sided adjustable deflector keeps materials out of unwanted areas

Weight (lbs.)	38.5
Tire Size (in.)	13
Hopper Capacity (lbs.)	85
Frame.	Stainless Steel



SPRAYERS



Shindaiwa Sprayers feature lightweight tanks with UV inhibitors marked in both gallons and liters, comfort grip handles with a lock-on or lock-out feature, and heavy-duty wands that include four nozzles.



SP231H

The SP231H is a 2-gallon, professional-grade, handheld sprayer.

- High-capacity, professional-grade pump
- Professional-grade fiberglass wand
- Critical seals and o-rings made from chemical-resistant material
- Includes adjustable, flat fan, hollow cone and jet stream nozzles

Tank capacity (gal).....	2
Weight (lbs.)	5
Pressure Rating (PSI).....	45
Tank opening (in.).....	4.5



SP401BP

The SP401BP is a 4-gallon, professional-grade internal piston pump backpack sprayer.

- 4-gallon tank with wide mouth opening for easy filling and cleaning
- 50 in. heavy-duty, nylon-reinforced hose
- Professional-grade fiberglass wand
- Critical seals and o-rings made from chemical-resistant material
- Includes adjustable, flat fan, hollow cone and jet stream nozzles

Tank capacity (gal).....	4
Weight (lbs.)	9.5
Pressure Rating (PSI).....	90
Tank opening (in.).....	5.5



SP401BPD

The SP401BPD is a 4-gallon, professional-grade diaphragm pump backpack sprayer.

- 4-gallon tank with wide mouth opening for easy filling and cleaning
- Diaphragm style pump
- 50 in. heavy-duty, nylon-reinforced hose
- Critical seals and o-rings made from chemical-resistant material
- Includes adjustable, flat fan, hollow cone and jet stream nozzles

Tank capacity (gal).....	4
Weight (lbs.)	11
Pressure Rating (PSI).....	90
Tank opening (in.).....	5.5



SP501BP

The SP501BP is a 5-gallon, professional-grade internal piston pump backpack sprayer.

- 5-gallon tank with wide mouth opening for easy filling and cleaning
- Internal, leak-free piston-style pump
- 50 in. heavy-duty, nylon-reinforced hose
- Critical seals and o-rings made from chemical-resistant material
- Includes adjustable, flat fan, hollow cone and jet stream nozzles

Tank capacity (gal).....	5
Weight (lbs.)	13.1
Pressure Rating (PSI).....	90
Tank opening (in.).....	5.5

SPRAYER ACCESSORIES



26 in. Brass Wand
Part # 99944100240



39 in. Fiberglass Wand
Part # 99944100410



60 in. Fiberglass Wand
Part # 99944100420



**Spot Spraying
Shield with Nozzle**

Protects plants and flowers
from overspray
Part # 99944100080



Adjustable Brass Spray Nozzle
Part # 99944100340



Shoulder Strap
For SP231H
Part # 99944100315



OIL & LUBRICANTS



PERFORMANCE ABOVE ALL™

COMPETITOR OIL



**38 HOURS 72% BLOCKAGE
ENGINE FAILURE**

**Based on Shindaiwa internal tests*

RED ARMOR® OIL



**75 HOURS 1% BLOCKAGE
KEEPS ENGINE
CLEANER LONGER**

RED ARMOR® OIL

Shindaiwa Red Armor Oil is a premium 2-stroke semi-synthetic engine oil formulated with powerful detergents and antioxidants to clean existing deposits, protect against future carbon build-up and promote longer engine life. With unique fuel stabilizers blended in, fuel stays fresh up to two years in a properly sealed container. JASO FD registered and ISO-L-EGD compliant. Red Armor cleans and protects to ensure optimum engine performance and prolonged engine life.

RED ARMOR® LUBRICANT

Red Armor Lubricant sets a new standard in lithium-based grease. Special adhesives and tackifiers eliminate sling-off and are impervious to water. With its enhanced protection power, capability to resist shock loads, ability to seal out moisture and contamination from critical components and corrosion resistance, Red Armor Lubricant is a high-performing, dependable grease to keep parts moving and lubricated for long lasting protection.

SHINDAIWA RED ARMOR®			
OIL			
Part # 83001	2.6 fl. oz. tray	(8) 6 packs	1-gallon mix
Part # 83002	6.4 fl. oz. tray	(8) 6 packs	2.5-gallon mix
Part # 83003	12.8 fl. oz.	12 per case	5-gallon mix
Part # 83004	1-gallon	4 per case	50-gallon mix
Part # 83010	5-gallon pail	1 pail	250-gallon mix
Part # 83009	55-gallon drum	1 drum	2,750-gallon mix

SHINDAIWA RED ARMOR®	
LUBRICANT	
Part # 84001	0.8 fl. oz. tube (12 per case)
Part # 84008	8 fl. oz. tube (48 per case)
Part # 84014	14 fl. oz. cartridge (36 per case)
IDEAL FOR:	
Gear cases, Spindles, Cables, Ball bearings	



**CLEANS
& PROTECTS**
— PROMOTES LONGER ENGINE LIFE —

Shindaiwa ONE 2-Stroke Engine Oil

- JASO FD registered and ISO-L-EGD compliant
- For use in all 2-stroke engines
- Delivers low smoke, temperature protection and fuel stabilization



- Part # 80037 6.4 fl. oz. (8) 6 packs
- Part # 80748 12.8 fl. oz. 24 per case
- Part # 81099 1-gallon 4 per case

shindaiwa®
YOU CAN MAINTENANCE KIT

**YOU CAN DO IT!
 IT'S EASY!**



- ✓ **Extend the life** of your equipment.
- ✓ **Reduce costly repairs** and downtime with routine maintenance.
- ✓ **Save money** doing the installation yourself. You can do it! It's easy!
- ✓ **Save time** with everything you need in one convenient package.
- ✓ **Genuine Shindaiwa replacement parts** deliver high-performance results.



MAINTENANCE DIRECTORY

Model	Tune-Up Kit	Fuel System Kit	Spark Plug
Blowers			
EB802/RT	84018Y	NA	84023Y
Chainsaw			
492	84021Y	NA	84023Y
591	84022Y	NA	84023Y
600sx	84022Y	NA	84023Y
Hedge Trimmer			
AH262, AHS262	84024Y	84010Y	NA
DH232, DH235	84014Y	NA	NA
FH235	84015Y	84025Y	84023Y
HT232, HT235	84014Y	NA	84023Y
Edger			
LE235	84015Y	84025Y	84023Y
LE262	84024Y	84010Y	NA
Multi-Tool System			
M235	84015Y	84025Y	84023Y
M262	84024Y	84010Y	NA
Trimmer/Brushcutter			
T235	84015Y	84025Y	84023Y
C262, T262/X	84024Y	84010Y	NA
C302, T302/X	84024Y	84011Y	NA
PowerBroom™			
PS262	84024Y	84010Y	NA

REPAIRS CAN BE COSTLY... MAINTENANCE SAVES YOU TIME & MONEY

• TUNE-UP KITS • FUEL SYSTEM KITS • COMMON WEAR ITEMS



PRODUCT SPECIFICATIONS

CHAINSAW SPECIFICATIONS

(+) available in Canada only (f) available in US only *without bar and chain **clutch driven

Model	Engine Disp (cc)	Engine Disp. (cu. in.)	Starting System	Ignition System	Purge Bulb	Oiling System	Vibration Reduction	Available Bar Length (in.)	Fuel Cap. (fl. oz.)	Oil Cap. (fl. oz.)	Dry Weight* (lbs.)
305s	30.5	1.86	i-30™	Digital	Yes	Automatic**	Yes	14	8.5	8.8	8.8
358Ts	35.8	2.19	Reduced Effort	Digital	Yes	Auto/Adjustable**	Yes	14, 16	11.2	8.2	8.0
402s	40.2	2.45	i-30™	Digital	Yes	Auto/Adjustable	Yes	18	13.9	9.5	10.1
493	50.2	3.06	Reduced Effort	Digital	Yes	Auto/Adjustable**	Yes	16, 18, 20	16.23	11.16	11.1
591	59.8	3.65	Standard	Digital	No	Auto/Adjustable**	Yes	18 (+), 20	21.8	10.2	13.2
600sx	59.8	3.65	Standard	Digital	No	Auto/Adjustable**	Yes	20, 24, 27 (f)	21.8	10.2	13.7

TRIMMER SPECIFICATIONS

Model	Engine Disp (cc)	Overall Length (in.)	Fuel Cap. (fl. oz.)	Cutting Swath (in.)	Dry Weight (lbs.)	Starting System	Vibration Reduction	Tool-Less Air Filter Access	Drive Shaft
T235	21.2	70.2	14.2	20	11.9	Standard	Yes	Yes	Solid Steel
T262	25.4	70.4	20.6	20	12.4	Standard	Yes	Yes	Hollow
T262X	25.4	70.5	20.6	20	13.7	Standard	Yes	Yes	Hollow
T302	30.5	70.4	24	20	13.7	Standard	Yes	Yes	4-Layer Cable
T302X	30.5	70.5	24	20	14.3	Standard	Yes	Yes	4-Layer Cable

BRUSHCUTTER SPECIFICATIONS

Model	Engine Disp (cc)	Overall Length (in.)	Fuel Cap. (fl. oz.)	Cutting Swath (in.)	Dry Weight (lbs.)	Starting System	Vibration Reduction	Tool-Less Air Filter Access	Drive Shaft
C262	25.4	70.5	20.6	20	14.1	Standard	Yes	Yes	Solid Steel
C302	30.5	70.5	24	20	14.8	Standard	Yes	Yes	4-Layer Cable

EDGER SPECIFICATIONS

Model	Engine Disp (cc)	Overall Length (in.)	Fuel Cap. (fl. oz.)	Dry Weight (lbs.)
LE235	21.2	69.7	14.2	13.2
LE262	25.4	69.7	20.6	14.3

BLOWER SPECIFICATIONS

Model	Engine Disp (cc)	Dry Weight* (lbs.)	Fuel Cap. (fl. oz.)	dB(A)	FLARED PIPE		ROUND PIPE	
					Air Volume (CFM)	Max Air Speed (MPH)	Air Volume (CFM)	Max Air Speed (MPH)
EB252	25.4	8.6	18.6	70	456	180	453	170
EB262	25.4	9.8	20.3	70	428	180	456	172
EB600RT	58.2	22.7	62.0	70	-	-	517	216
EB633RT	63.3	26.2	67.6	74	-	-	651	233
EB770/RT	63.3	24.5/24.3	68.3	74	-	-	756	234
EB910/RT	79.9	27.5/27.2	83.8	80	-	-	1,110	220

HEDGE TRIMMER SPECIFICATIONS

Model	Engine Disp (cc)	Blade Length (in.)	Shaft Length (in.)	Overall Length (in.)	Fuel Cap. (fl. oz.)	Dry Weight (lbs.)	Vibration Reduction	Rotating Handle	Range	Exhaust Tube
DH232	21.2	22	-	41.9	12.5	11.0	Yes	Yes	-	Forward-facing
DH235	21.2	28	-	47	12.5	11.4	Yes	Yes	-	Forward-facing
HT232	21.2	28	-	41.5	12.5	10.2	Yes	-	-	Forward-facing
HT235	21.2	38	-	51.2	12.5	10.8	Yes	-	-	Forward-facing
FH235	21.2	21	42	79.4	14.2	12.5	Yes	-	-	-
AH262	25.4	21	59	96.1	20.6	14.3	Yes	-	135 Degrees - 10 Positions	-
AHS262	25.4	21	33	70.2	20.6	13.7	Yes	-	135 Degrees - 10 Positions	-

MULTI-TOOL SYSTEM SPECIFICATIONS

Model	Engine Disp (cc)	Dry Weight (lbs.)	Fuel Capacity (fl. oz.)
M235	21.2	9.8	14.2
M262	25.4	10	20.6

POWERBROOM™ SPECIFICATIONS

Model	Engine Disp (cc)	Dry Weight (lbs.)	Fuel Capacity (fl. oz.)
PS262	25.4	13.3	20.6

shindaiwa®



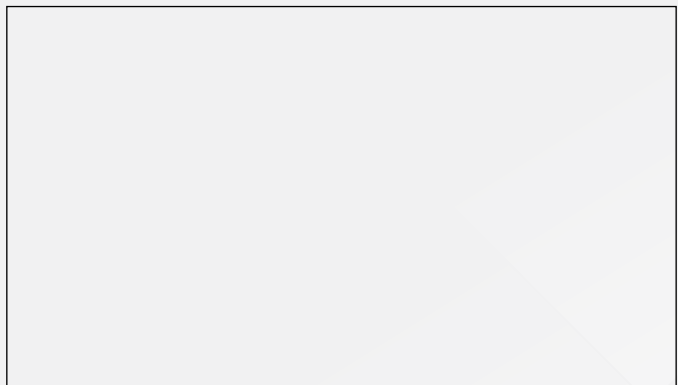
www.facebook.com/ShindaiwaUSA



www.instagram.com/ShindaiwaUSA



www.youtube.com/ShindaiwaUSA



ECHO Incorporated • 400 Oakwood Road, Lake Zurich, IL 60047-1564 • 877.9.TORQUE • SHINDAIWA-USA.COM

SHINDAIWA PRODUCT WARRANTY Shindaiwa products are manufactured to superior quality standards to afford our customers the highest level of satisfaction. In keeping with this goal, Shindaiwa products are warranted to be free from defects in material and workmanship, under normal use and maintenance, and will correct any defect without charge for parts or labor at any authorized Shindaiwa servicing dealer during the warranty period. For commercial use, the warranty period will be two (2) years from date of purchase. The chainsaw warranty period is one (1) year from date of purchase. Some products are not available in all areas. Contact your Shindaiwa dealer for information.

Specifications of products are subject to change without notice.

© 2023 ECHO Incorporated, a subsidiary of Yamabiko Corporation. All Rights Reserved.

Printed in the U.S.A. #MKT2320001